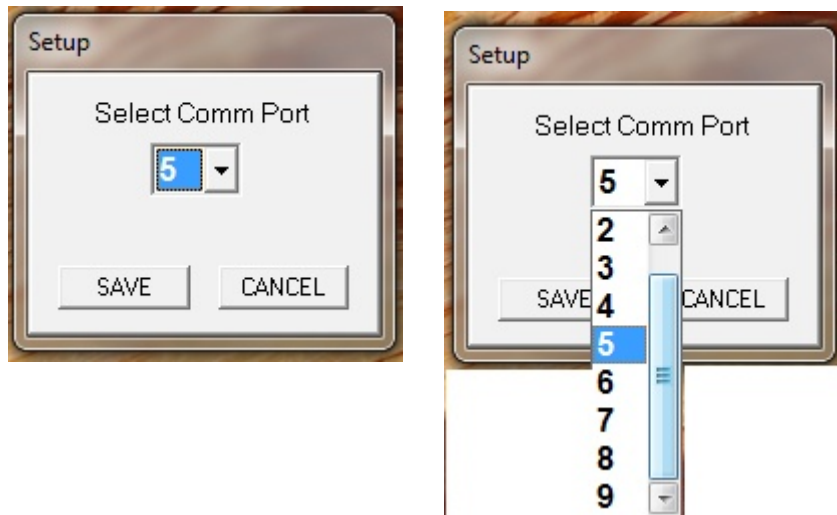


Working with CSWin32 Software Addendum 7-1-13

COMM Setup

Windows computers rarely have 9 pin COMM ports these days. Serial communications are via USB. When working with USB to serial converters (Belkin, Dynex, etc), the comm port may be one of many virtual ports. V1.0.33 and later provides access to comm ports 1-9. V1.0.33 has a port designation offset, so if MS Device Manager tells you your adapter is on port 4, you must select port 5 in the set-up window, i.e.



Summing and Scaling

In Versions 1.0.30 and later, SUM LINEAR is an active choice. SUM PROPORTIONAL, the first selection simply didn't perform as it was supposed to. SUM LINEAR should be used in PI applications. The proportion of ultrasonic position with respect to the analog signal is entered. In the example at right, the contribution of the position signal is only 10% of the 0-10VDC signal output. The other 90% is contributed by the external analog signal brought into the card on J5.

