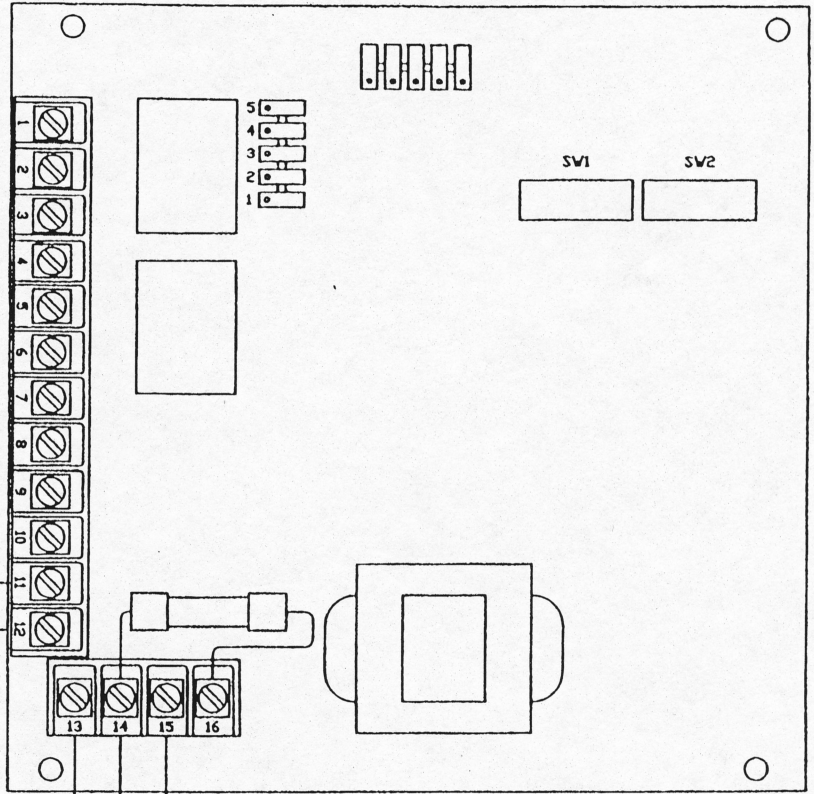


EQUIVALENT TERMINALS

CS-4300	CS-5000
1	12 WIPER
2	13 NORM
3	14 LIMIT
4	9 WIPER
5	10 NORM
6	11 LIMIT
10	1 JOG
11	3 COMMON
12	2 SIGNAL
13	15 GND
14	16 L1
15	17 L2

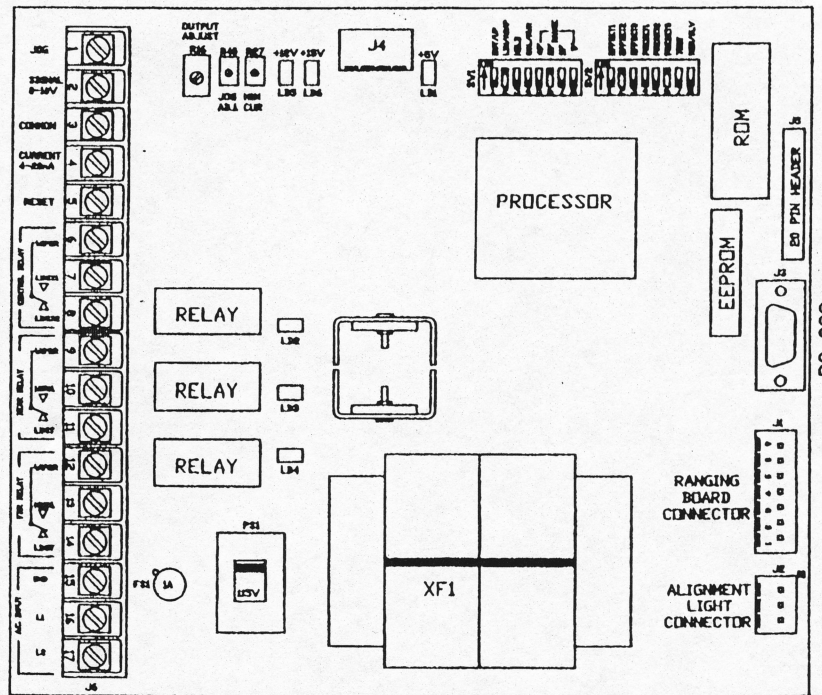
COMMON
SIGNAL (0-10V)



GND L1 L2
(120V A.C. INPUT)

MODEL CS-4300
LOOP CONTROL
PROCESSOR BOARD

SIGNAL (0-10V)
COMMON



(120V A.C. INPUT)

MODEL CS-5101M
LOOP CONTROL
PROCESSOR BOARD

THIS DRAWING AND THE INFORMATION CONTAINED THEREIN ARE THE PROPERTY OF COILTECHNOLOGY INC. AND MAY BE USED AS AUTHORIZED.

<p>colitek coil technology inc.</p>	
<p>SCALE: 1"=2"</p>	<p>DATE: 09/16/98</p>
<p>TOLERANCES EXCEPT AS NOTED</p> <p>DECIMAL: .X ±.1, .XX ±.015, .XXX ±.005</p> <p>FRACTIONAL: 1/16 ±.005, 1/8 ±.005, 1/4 ±.005</p> <p>ANGULAR: ±.1°, ±.2°</p>	<p>CUSTOMER: COILTEK</p> <p>PLANT: VADSWORTH, OH</p> <p>DRAWN BY: M. LALLATHIN</p> <p>APPROVED BY:</p>
<p>TITLE: CONVERSION FROM CS 4300 TO A CS 5000 MAIN BOARD</p>	
<p>DRAWING NUMBER: D-000001-A</p>	