

Targets:	Ferrous and nonferrous metal, mesh, plastic, rubber, paper, or fabric. Minimum target size .25 inch (6.35 mm) wire up to 50 inches (1.3 M) away; 1.0 inch (25 mm) strip up to 253 inches (6.4 M) away.
Set-Up:	Simple 3 button set up calibrates the unit in <15 seconds. PC software interface allows more refined set up. Download free software at coiltek.com. Program and store up to 8 separate control programs in FLASH memory. Three stored programs can be accessed from a remote switch or PLC.
Range:	13 inches (152 mm) to 360 inches (9.1 M) from the sensing head. To operate over a looping pit, simply reverse the base plate.
Control Span:	Output signal varies from minimum to maximum over this distance. Set Control Span anywhere within the 6 to 253 inch range. Using PC software span is 1 inch (25 mm) minimum to 354 inches (9 M) set in 1 inch increments.
Resolution:	Analog: 10 bit (0.171 mm) @ 68 degrees Fahrenheit. Digital: 16 bit.
Control Output:	0-10 VDC or 4-20 mA (scalable). Output is linear, proportional to target position within the control span. Switch inverts signal slope for takeup or payout operation. Outputs are referenced to power supply ground.
Relay Outputs:	Four relay outputs: NEAR, FAR, and CONTROL 1 & 2. Normally NEAR and FAR relays trip at the control-span limits and the CONTROL relays are inactive. With PC setup the user can set NEAR margin trip point anywhere above the control range. The CONTROL relays are set exclusively by remote computer and can turn ON at one preset distance and OFF at another.
Computer Interface:	Coiltek CSWin software allows interactive programming of all functions with simple-to-use, menu-driven software. Accepts standard PC USB.
Electrical:	Standard: 120 or 240 VAC single phase. May be ordered less supply for 24 VDC operation.
Environment:	Hinged cover NEMA 12 enclosure. Knockout provided for cabling.
Housing:	Temperature 32 degrees to 184 degrees Fahrenheit (0-70 C). Humidity 5% to 95% (non-condensing).

**All units shipped UPS or FedEx. Next day air service available.
Made with pride in the USA.**

coiltek

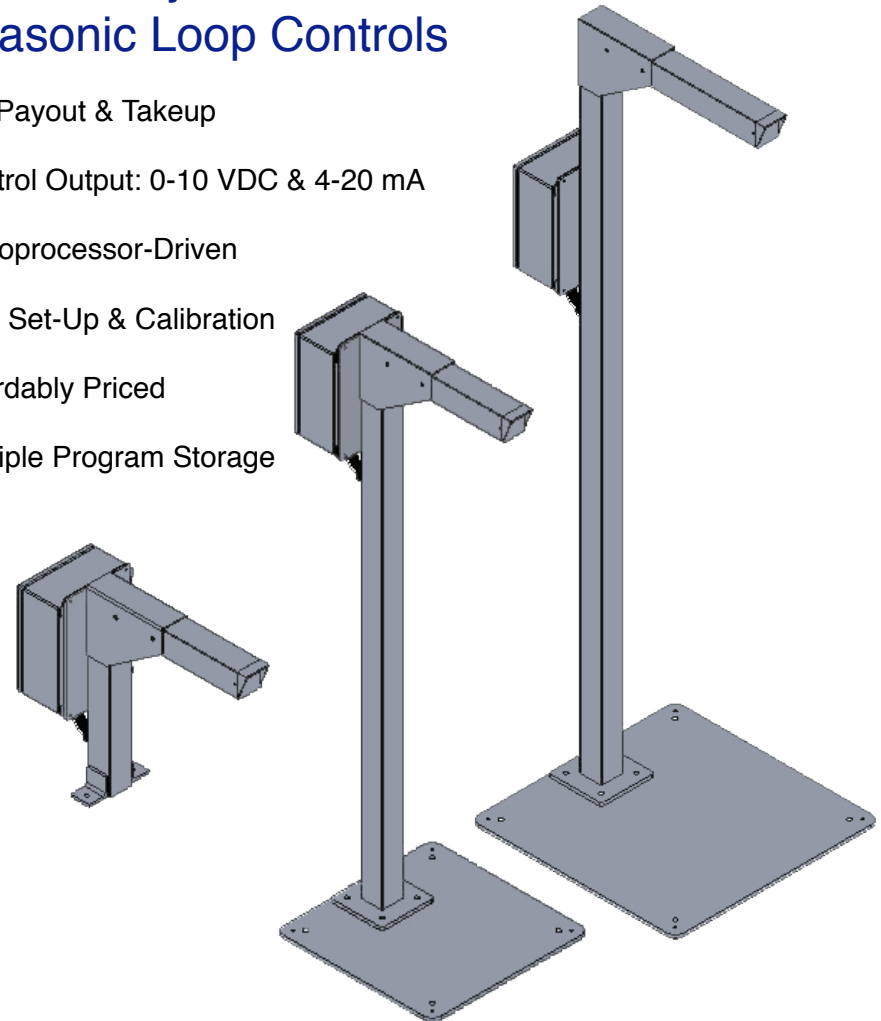
Coil Technology, Inc. P.O. Box 540 Wooster, OH 44691
Tel: (330) 601-1350 Toll Free: (800) 883-7542 Fax (330) 601-1352
email: info@coiltek.com Web: www.coiltek.com

coiltek®

CS-5000 V2

The Industry Standard in Ultrasonic Loop Controls

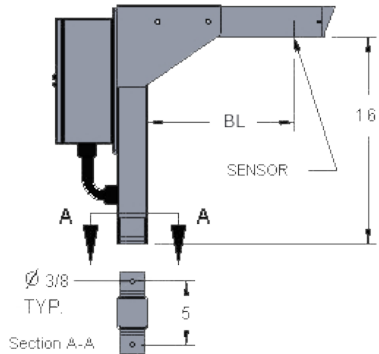
- For Payout & Takeup
- Control Output: 0-10 VDC & 4-20 mA
- Microprocessor-Driven
- Fast Set-Up & Calibration
- Affordably Priced
- Multiple Program Storage



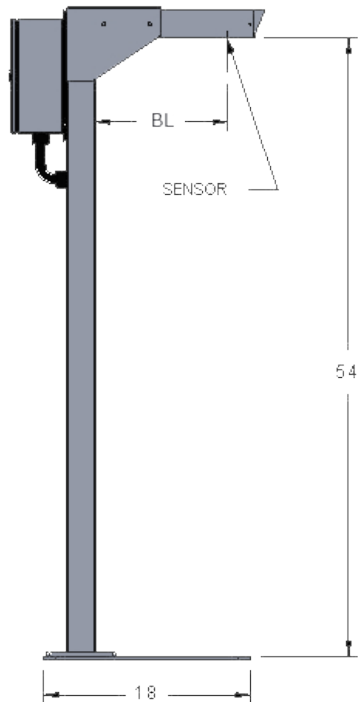
The CS-5000 Series Ultrasonic Loop Control Systems

Model CS-5000-15BL

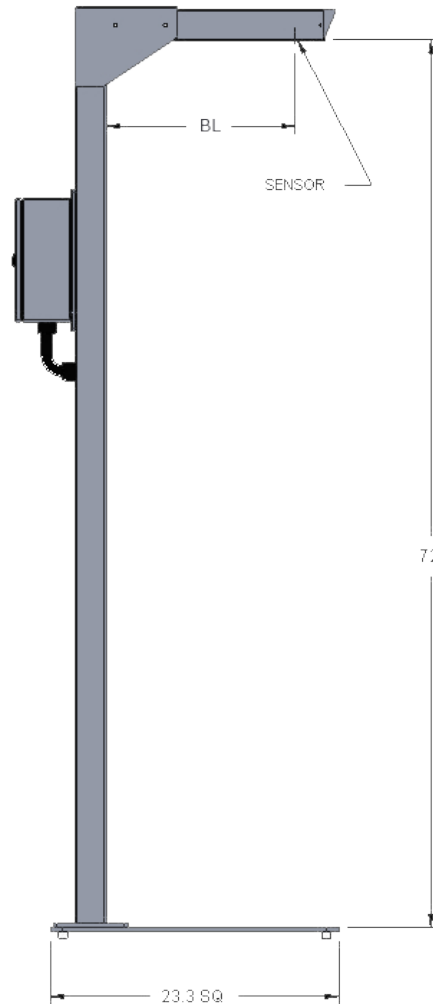
For Threading Table Applications



Model CS-5000-54BL



Model CS-5000-72BL



Ordering Information

Model CS-5000-HTBL
where HT = Stand Height
and

BL = Boom Length

Available Boom Lengths:

11 inches

15 inches

21 inches

25 inches

30 inches

36 inches

39 inches

45 inches

48 inches

Example: CS-5000-7221

For 24 VDC operation
(draws < 500mA), add LPS.

Example:

CS-5000-7221LPS

Accessories for the CS-5000 Series

The 3CPO

Allows remote access to up to 3 saved programs via selector switch on NEMA enclosure.



The CTAC-2

Cast aluminum cone lined with acoustical foam, which eliminates off-axis ultrasonic interference.



coiltek®